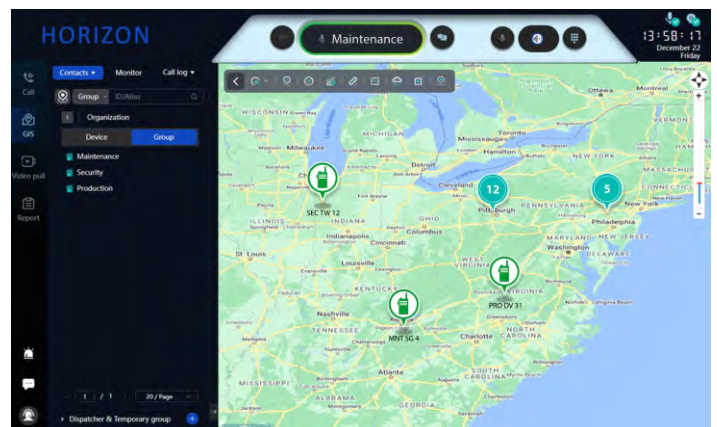


# HORIZON DISPATCH

## Web-Based Dispatching Application for Nationwide Push-to-Talk over Cellular (PoC) Communications

HORIZON Dispatch provides a clean and professional interface to efficient group or individual communications and location tracking for Hytera PoC radios on the HORIZON nationwide subscription Push-to-Talk over Cellular service.

HORIZON Dispatch supports instant nationwide group calling, individual calling, texting, and sharing images and videos. HORIZON Dispatch leverages the GPS built into Hytera PoC devices for tracking of locations and travel routes with time stamps.

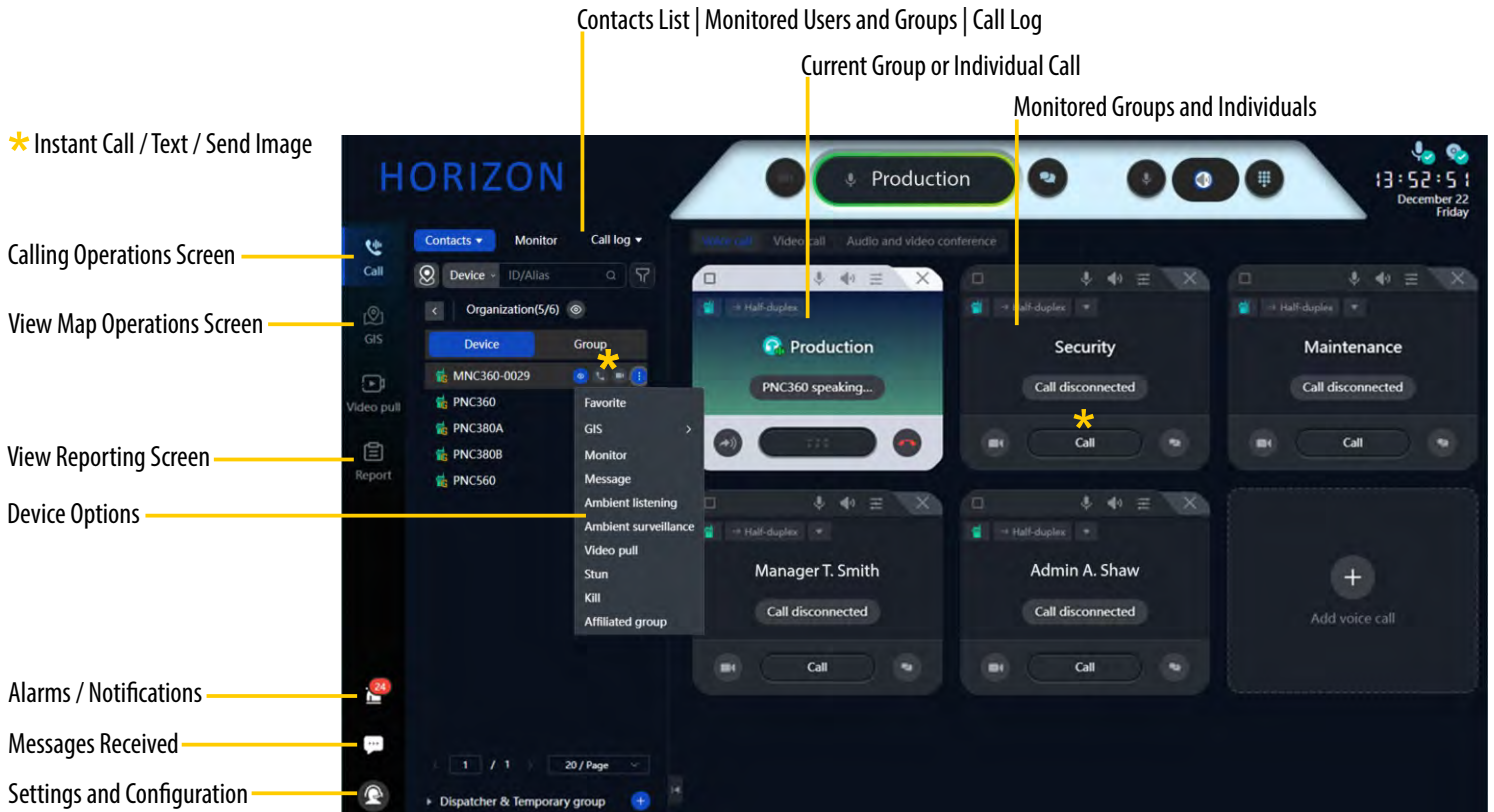


**Look to HORIZON for Limitless Push-to-Talk Communications**

# User Interface

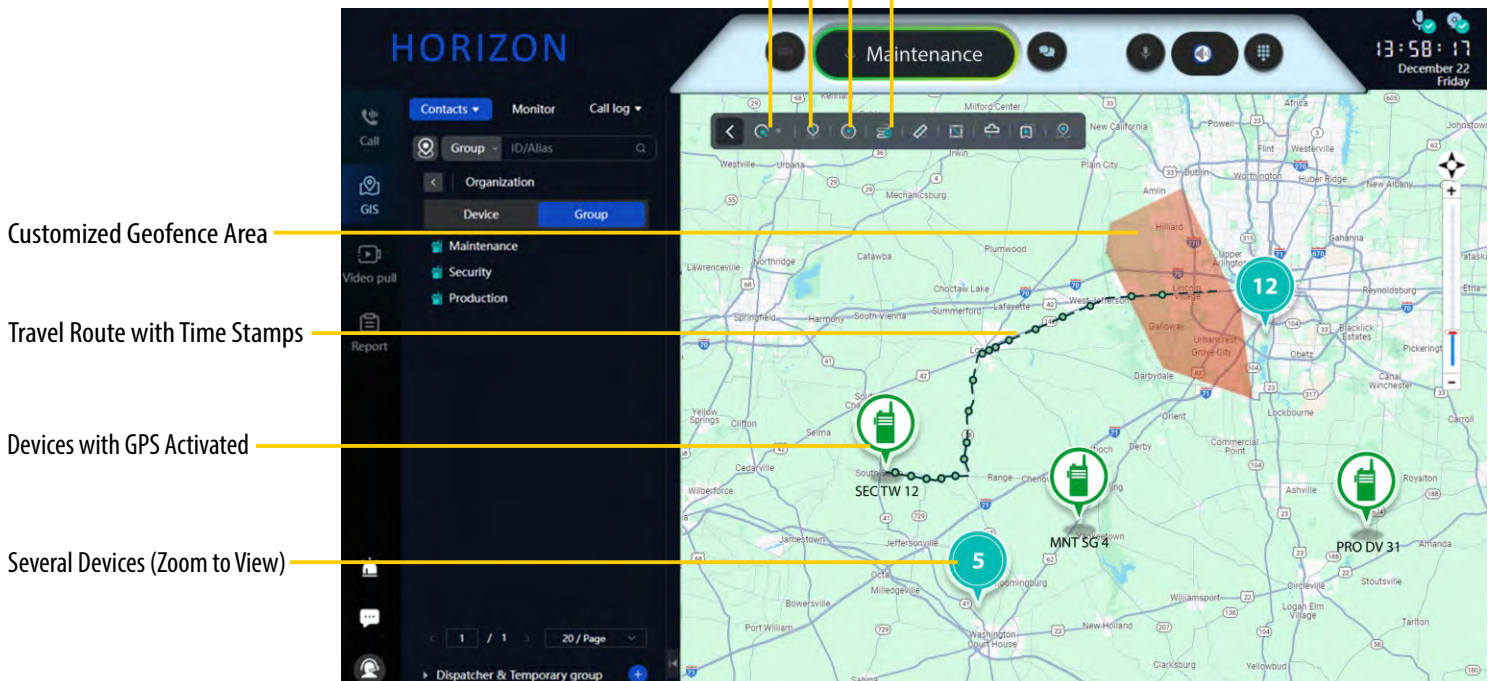
Dispatchers can customize the entire communication control center and easily add any group or device to the main operating screen, making the handling of multiple calls much easier and faster.

Each calling tile has separate volume controls and calling options, allowing the dispatcher to quickly make an individual or group call, or send a text, image, or video.



With the map interface, dispatchers can manage and coordinate wide area fleets with GPS location tracking, travel routes with time stamps (active and historical), geofences and speeding alarms

Dynamic Group Call (Cursor Selection on Map)  
 Draw Geofence  
 Overspeed Alarm  
 Historical Route Tracking





# Key Features

## GROUP AND INDIVIDUAL CALLING

- HORIZON leverages 4G/5G/LTE and Wi-Fi networks to provide secure and instant nationwide radio communications
- Instant nationwide group and individual calling with a customized calling area where the dispatcher can create commonly used groups for dispatch operations
- Quickly and easily put individuals into a special impromptu call group when needed
- Supports full-duplex calls where users can speak any at any time, like on a cell phone
- When monitoring multiple calls, the volume levels can be adjusted for an individual or group

## MAP WITH GPS FLEET LOCATION TRACKING

- Enables tracking of driver locations and travel routes with finely selectable time stamp rates
- See live GPS tracks and play back historical routes
- Real-time speed and direction with customizable speeding alarm
- Configurable default map zoom level

## GEOFENCING

- Define a virtual geographic boundary based GPS location tracking
- Receive alarms when workers enter or leave geofence areas



## CALL RECORD STORAGE AND REPORTING OPTIONS

- Instantly review, play, search, and export logs for calls, messages, emergency alarms, geofencing alarms, and overspeed alarms
- Export reports to create tables, statistics, and graphs for individual and group call counts

## WEB-BASED APPLICATION

- Run HORIZON Dispatch on a standard Chrome web browser
- No need to install and upgrade client software updates, simply sign in
- Unlimited simultaneous users with separate dispatcher accounts

## SAFETY FEATURES

- Supports sending and receiving Emergency alarms or calls for enhanced worker safety
- Dispatcher can activate remote ambient monitoring of audio during emergency situations

## TEXT MESSAGING

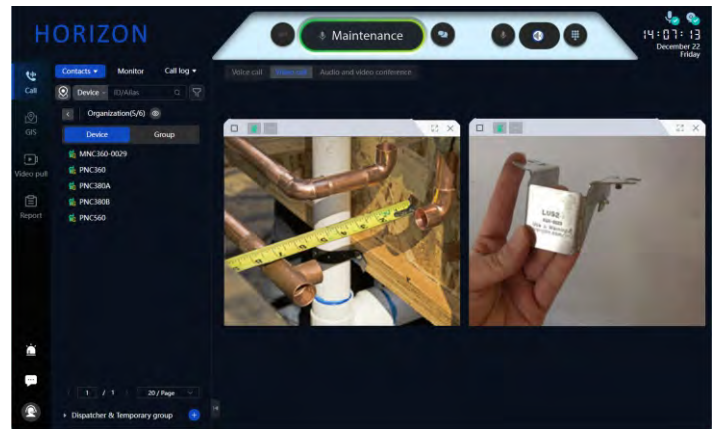
- All users can communicate with each other and dispatch with free-form voice or pre-programmed and customizable text or voice recorded messages

## REMOTE STUN, KILL, AND REVIVE

- Dispatch provides a safety features of radio stun (temporarily disable) and revive (turn on) or kill (permanently disable) remote radios that are lost, stolen, or used maliciously

## CUSTOMIZABLE LOGIN SCREEN AND LOGO

- Provide a more unique, branded look and feel on the Dispatch login screen and upper left logo area



## MULTIMEDIA CAPABILITIES

- Dispatcher can share texts, images, and videos between remote users and dispatch for fast decision making and solving problems

# System Requirements and Accessories

HORIZON Dispatch works on any Windows based PC with an internet connection using a Chrome browser. In addition, there are optional accessories that provide ease of use, including desktop microphones and external speakers. Contact Hytera US Inc or your Dealer for more information.

# Hytera PoC Devices

Hytera provides a wide variety of PoC devices for operation on the HORIZON nationwide PoC system, including PoC handheld radios, PoC mobile radios, and PoC mobile computers.

- Industry-leading audio quality with AI-based digital noise suppression
- Longest battery life available
- Rugged and reliable
- Built in Wi-Fi, Bluetooth, and GPS



## Target Applications



Organizations that use HORIZON Dispatch require cost-effective, wide-area group communications and location tracking.

- Security Companies
- Fleet Operations
- Schools and Universities
- Manufacturing
- Warehouses and Logistics
- Hotels and Resorts
- Property Management
- Hospitals and Healthcare
- Agriculture
- Construction and Building Materials
- Event Production and Catering
- TV and Film Production
- Tow Truck Companies
- Landscaping Services
- Waste Collection
- Technology Services



**Hytera US Inc**  
8 Whatney, Irvine, CA 92618  
(954) 846-1011  
[www.hytera.us](http://www.hytera.us) [info@hytera.us](mailto:info@hytera.us)



©2025 Hytera US Inc. All Rights Reserved.  
Hytera retains right to change the product design and specification.  
HORIZON\_Dispatch-DS-C 3/25



Phone: (513) 794-1275  
Email: [info@dcgradio.com](mailto:info@dcgradio.com)  
1008 Seabrook Way Cincinnati, OH 45245